

Third Annual
Art in the Park

Juried Outdoor Public Sculpture Exhibition
August 1 – October 1, 2010
Elm Park, Worcester, MA

CALL FOR ENTRIES

Release Date: Friday, March 12, 2010

Deadline: Friday, May 14, 2010

Eligibility: Open to New England artists.

Building on the momentum from the last two years' popular exhibitions, the Worcester Cultural Commission invites artists to forward a selection of up to three existing sculptures or installations for our juried outdoor sculpture exhibition in Elm Park, Worcester from August 1 – October 1, 2010.

Artists are encouraged to enter particularly **large-scale work** for installation on the grounds, floating in one of its three shallow ponds, or suspended from trees. Elm Park is a heavily utilized public park. As this is a two-month outdoor exhibition in a popular public setting, **durability** of the artwork is a major consideration in the selection of works. Another emphasis will be the inclusion of artwork that children and the general public can touch and interact with.

There is no application fee. Artists may offer works for sale.

The project is sponsored by the Worcester Cultural Commission, ARTSWorcester, and the City of Worcester and its Department of Parks and Public Works, with partial funding from the Massachusetts Cultural Council.

Prizes and Honoraria:

Prizes of Excellence will be awarded for best works:

First Prize of Excellence will be a Popular Prize award from the community at large. Second and Third Prizes of Excellence will be awarded by the Jurors.

Exhibiting artists will receive a \$300 stipend from the Worcester Cultural Commission to cover the cost of transportation, installation, and de-installation. Sales of artists' works are not subject to commission, however exhibition organizers ask for a tax-deductible 10% contribution to Park Spirit, a 501(c)(3) non-profit organization that funds cultural programming in the City of Worcester.



Third Annual
Art in the Park

Juried Outdoor Public Sculpture Exhibition
August 1 – October 1, 2010
Elm Park, Worcester, MA

Art in the Park 2010 Jurors:

Nicholas Capasso, Ph.D. is Senior Curator at the DeCordova Sculpture Park + Museum in Lincoln, Massachusetts, where he oversees a 35-acre outdoor sculpture program with over 60 works on display, including sculptures by Antony Gormley, Sol LeWitt, Nam June Paik, and Ursula von Rydingsvard. In addition to his duties at DeCordova, he has worked extensively with contemporary art, outdoor sculpture, public art as an art historian, guest curator, critic, lecturer, and design selection panelist.

Ann Jon is the Executive Director at SculptureNow, a not-for-profit arts and educational organization in the Berkshires, since 1998. In this capacity she has curated and organized major outdoor sculpture shows, working with national and international artists. Ann also conducts sculpture workshops throughout Massachusetts, in public schools and museums such as the Institute for Contemporary Art in Boston. Her sculpture has been exhibited regionally and nationally, is included in museums, private and corporate collections, and has been supported by numerous grants and honoraria. She studied sculpture in Carrara, Italy and New York, NY.

Pamela R. Tarbell is the owner and Director of the Mill Brook Gallery & Sculpture Garden, Concord, NH, for the past fourteen years. The gallery runs rotating exhibits, and an annual outdoor juried sculpture exhibit, by local, regional, and nationally known artists. Tarbell is a trustee of the League of New Hampshire Craftsmen, the New Hampshire Citizens for the Arts, is on the Advisory Board for the New England Sculpture Association, and a board member of Creative Concord. She has participated on several committees to select public art and Percent for Arts in New Hampshire. She is a graduate of the Rhode Island School of Design.

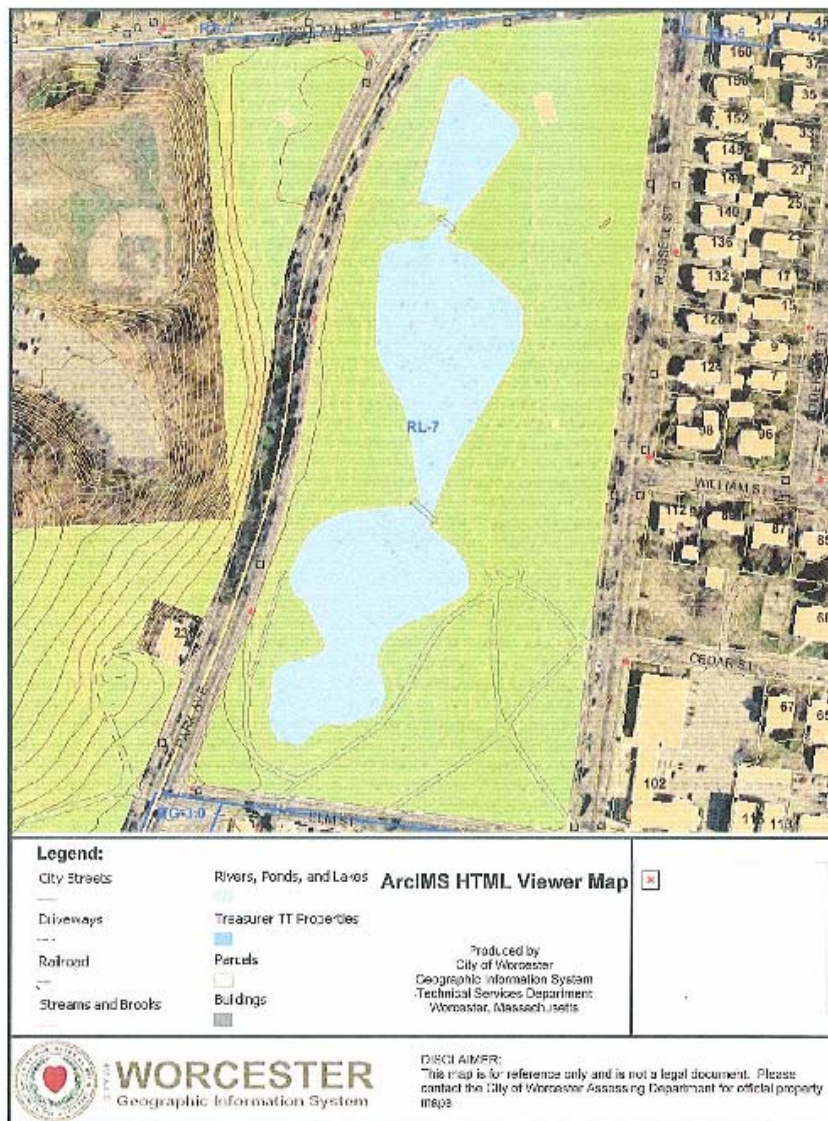


Third Annual
Art in the Park

Juried Outdoor Public Sculpture Exhibition
August 1 – October 1, 2010
Elm Park, Worcester, MA

About Elm Park, Worcester, MA:

Elm Park, the best-known historic park in Worcester, was purchased in 1854 using public funds. It is recognized as one of the first purchases of land for a public park in the United States. Elm Park was designed in 1880 by Frederick Law Olmstead, and is listed on the National Register of Historic Places. Elm Park is known for its two historic bridges over the three interconnected shallow Mere Ponds. A perimeter walking path surrounds the ponds and large old trees add to the historic character. Park facilities include a playground, tennis courts, basketball, picnic areas, and winter skating.



Third Annual
Art in the Park

Juried Outdoor Public Sculpture Exhibition
August 1 – October 1, 2010
Elm Park, Worcester, MA

Exhibition Considerations:

Use: Elm Park is a well-loved park with upwards of 1,000 visitors on weekend days during nice weather. Families and children especially respond to sculptural installations. **Public safety and durability of the artwork are major selection considerations.** Another emphasis will be on the inclusion of artwork that children and the general public can touch and interact with.

Selection: Jurors will select 20 works for the exhibition based on aesthetic quality, suitability for an outdoor environment, as well as durability and public safety. Larger sculptures make more of an impact on the site and are more likely to withstand the activities of the public as well as weather. Pieces larger than 6' in any dimension or weighing greater than 250 lbs are encouraged, but are not mandatory. Sculptures relating to themes of sustainability are also encouraged.

Artists Engagement: Artists are strongly encouraged to participate in community events as outlined in the schedule, and to be available to the public for artist tours. In addition, a number of community-related activities are organized around the exhibition. Artists are strongly encouraged to participate in these community events, as the exhibit instills a strong community response to the art. Invitations to Art in the Park community-related events will be offered by the exhibition committee and communicated to exhibiting Artists in May and June 2010.

Installation: Anchors of up to 1-foot depth are permitted. Sculptures must be either large enough to prevent theft and/or mounted securely. Artists are responsible for bringing the sculpture to Elm Park, after which the parks department is available with the necessary equipment to assist in the installation. Guide wires must be marked and/or secured by protective barriers. Tree sculptures may be installed utilizing flexible clamp mechanisms that will not harm trees.

Siting: The exhibition planning team will determine siting of the works in the 5-acre park area surrounding Mere Ponds. Regard to maintaining healthy planted areas, and avoiding damage are considerations. **Sculptures must remain installed for the entire duration of the exhibition.** All works are subject to approval by the project partners, the City of Worcester, and other agencies as appropriate.



Third Annual
Art in the Park

Juried Outdoor Public Sculpture Exhibition
August 1 – October 1, 2010
Elm Park, Worcester, MA

Related Programs:

Cultural arts programming takes place in Elm Park and surrounding areas throughout the exhibit period, including a Thursday evening concert series beginning on July 8th at 6:30 PM. These concerts are co-sponsored by Park Spirit and the City of Worcester. The exhibition committee is focused on ensuring that a number of community-related activities are organized around the exhibition, to enhance and broaden the community appeal.

The award ceremony for the artist prizes will take place during the afternoon on Sunday, September 19, 2010 during the stART on the Street festival, Park Avenue, Worcester. This is the largest arts street festival in central Massachusetts. Visit <http://www.startonthestreet.org> for more information.

ART IN THE PARK 2010 EXHIBITION Schedule:
WORKS ON DISPLAY IN ELM PARK FROM AUGUST 1 – OCTOBER 1, 2010

Friday, March 12	Release Call to Artists
Friday, May 14, 2010	Deadline for submission
Friday, June 18	Artist notification
Week of July 25th	Installation of sculptures
Thursday, August 5th (Rain date August 12)	Opening Ceremony along with ParkSpirit Concert 5:00–6:00 PM Artists tours of works (1 st half exhibition) 6:30-7:00 PM Artists tours of work (2nd half exhibition) 6:30 PM Concert (TBD) 8:00–9:00 PM Artist reception (TBD)
Sunday, August 8 (Rain date August 15 th)	Art in the PARKing Lot festival 11:00 AM – 3:00 PM Sole Proprietor parking lot. Sculpture tours in Elm Park, sculpture demonstrations
Sunday, September 19	stART on the Street Festival , Park Ave. Worcester 9:00 AM – 5:00 PM (30,000 attendance expected) Afternoon (TBD) – Awards presented to Art in the Park winners
Week of September 26	De-Installation of sculptures



Third Annual
Art in the Park

Juried Outdoor Public Sculpture Exhibition
August 1 – October 1, 2010
Elm Park, Worcester, MA

APPLICATION PROCESS

Artists may enter up to three works.

Interested artists may only submit entries by email to
art.in.the.park.worcester.ma@gmail.com

Questions about the exhibition may also be directed to this email address.

Art in the Park 2010 Artist Application checklist:

- Brief description or artist statement.
- Artist resume with current contact information.
- Up to 5 clearly labeled JPEGs of up to 3 existing works
 - Artists may send JPEGs formatted as follows:
 - Formatted to read in Adobe Photoshop
 - 300dpi Image resolution
 - Maximum file size per image – 1MB
 - Name each image: lastnamefirstnameimagenumber.jpg
- Image list (see form on next page)



Third Annual
Art in the Park

Juried Outdoor Public Sculpture Exhibition
August 1 – October 1, 2010
Elm Park, Worcester, MA

I. Contact Information

Name _____
Address _____ City _____ State _____ ZIP _____
Home Phone _____ Studio Phone _____
Work Phone _____ Fax _____
Email Address(es) _____
Website _____

II. Entered Work (up to three) in order of preference

1. Title: _____
Materials: _____
Dimensions (including base): H: _____ W: _____ D: _____ Weight: _____
Year completed: _____ For sale? Yes: No: Sale price: _____
Installation Method:

2. Title: _____
Materials: _____
Dimensions (including base): H: _____ W: _____ D: _____ Weight: _____
Year completed: _____ For sale? Yes: No: Sale price: _____
Installation Method:

3. Title: _____
Materials: _____
Dimensions (including base): H: _____ W: _____ D: _____ Weight: _____
Year completed: _____ For sale? Yes: No: Sale price: _____
Installation Method:

